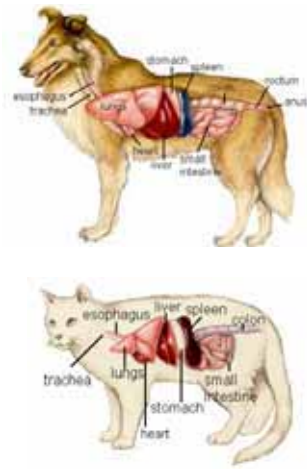




Information Guide

Nutritional Blood Test & Nutraceutical Therapies





Here is how we Support You throughout the Evaluation & Care Cycle

YOUR Decisions

Case Evaluation



You Run A Standard Set of Blood Tests to Confirm Your Assessment, plus the Antech Nutritional Blood Test to Deepen Your Understanding of the Illness

Treatment

You Decide Upon an Overall Course of Care Including Nutritional Therapy



Partnership

You Decide to Partner with Animal Nutrition Technologies to Offer Our Turn-key Package of Evaluation Services, Superior Products and Top-notch Customer Service



OUR Support

Evaluation Support

We help you interpret the 35 key indicators provided by Antech's Nutritional Blood Test (NBT).

Shared goals:

Gain a better understanding of the overall health of the animal and the underlying initiating causes of the illness.

Provide a deeper source of baseline information on the condition of the animal's organs and immune systems that may be weakened, out of balance, or at risk of failing.

Help improve the success by defining a course of targeted nutritional therapy to address the nutritional deficiencies.

Superior Quality Products



Animal Nutrition Technologies provides a complete range of professional products offered exclusively through veterinarians, clinics and animal hospitals. The services, clinical support and high quality products offer a valuable added service to your clients and an added source of profit for your practice.

Look at what else we provide to ensure our mutual success

- Analysis of your likely usage to ensure you carry the right mix of our products to maximize sales and minimize your investment
- In-depth product training at both the veterinarian and vet tech levels
- Placement of explanatory waiting room marketing materials
- Placement of the proper Antech forms and case specific questionnaires
- Set up of the administrative interface with our online ordering system
- Establish communication process for case-by-case evaluation support as well as for help defining the proper therapy

Targeted Therapies

Animal Nutrition Technologies utilizes its database of over 30,000 nutritional blood tests, the related therapies that were prescribed, and case outcomes to recommend the best possible program of nutritional support for the animal.

Help Choosing the Right Therapy is Straightforward and Easy

- Daily supplements to promote performance and daily energy
- Therapies targeted to address imbalances and emerging problems
- Custom blended nutraceuticals to address specific disease conditions

Nutritional Blood Test F.A.Q.s

What is the Nutritional Blood Test?

The Nutritional Blood Test, or NBT, is a diagnostic tool used by veterinarians who recognize the importance of integrating nutrition with patient care. The NBT assesses the health of internal organs and the available vitamins, minerals and enzymes required for the metabolic processes. Using blood results and medical history, the NBT prioritizes the nutrients required to help optimize organ function and balance metabolism.

It then matches the results to specific nutraceuticals that support a clinical response. The NBT nutritional therapy is adjunctive to your other methods of treatment. In addition, the supplements that comprise the NBT Nutraceutical Therapy can help improve chronic conditions and support the healing process. Even if the patient is already using supplements, the NBT enhances the ability to dispense them effectively.

How does the NBT work?

The levels of certain chemicals in the blood are the end result of the metabolic processes and the utilization or excretion of these metabolic wastes from the body. The NBT looks beyond chemical testing and quantitative assays to identify deficiencies or imbalances due to poor nutrient absorption, utilization or metabolism. One contributing factor to the reported steady rise in chronic degenerative diseases in animals is the inadequate levels of vitamins, minerals, enzymes and vital nutrients found in many commercially prepared foods. Over time the animal's nutrient reserves can become depleted, paving the way to disease. The NBT is a valuable tool for helping to correct these imbalances and guiding sick animals back to health.

The Optimum Range

Within the normal blood reference range, there are subtle gradations of tissue integrity and organ efficiency that can be measured. The NBT assessment relies on an Optimum Range, an additional set of parameters that are narrower than the traditional reference range and in which organs and metabolic processes are functioning at peak efficiency. Results outside of the optimum range do not necessarily indicate disease. They do, however, indicate that a particular organ system is not functioning at optimal efficiency, and may require nutritional support. Just as the interpretation outside the normal range forms the basis for the diagnosis of a specific disease, the optimum range interpretation forms the basis for determining optimal- not just "passable"- health. The NBT compares the blood results to the optimum range. When a value falls outside of the optimum range, the underlying physiology and metabolism, as well as the specific glands involved and nutrients used by the body for these processes, are assessed. The



1175 Post Road East
Westport, CT 06880
tel: 203 341 8875
toll free: 888 533 5162
fax: 203 227 8094
www.animalnutritiontechnologies.com

assessment is further evaluated in combination with the diagnosis and the clinical signs, resulting in a recommended NBT Nutraceutical Program that is specific to your animal.

What are the benefits of the NBT?

The NBT is not only beneficial as adjunctive therapy for serious ailments, but also for preventing disease in apparently healthy animals. While the NBT has historically been utilized for patients with chronic disorders, and increasing number of veterinarians and their patients have begun to utilize the NBT in wellness and preventative veterinary care. The NBT is based on the principle that changes occur in the blood before symptoms appear. Since the NBT can help to identify nutrient imbalances and early warning signs of impending disease, it is the ideal tool to incorporate into regular physical examinations.

How can I get an NBT?

Antech Diagnostics:

Animal Nutrition Technologies is the exclusive provider of nutritional blood testing through Antech Diagnostics, and your NBT request can be submitted directly to Antech for processing. Please contact your local Antech representative for pricing.

1. Simply draw two vials of blood, red top serum separator and lavender top.
2. Fill out Antech form #9945 NBT (included with this packet, but available through Antech as well.)
3. Submit the blood and proper forms directly to Antech Diagnostics

Outside Blood Analysis Providers:

Animal Nutrition Technologies is happy to accept blood analyses from different providers other than Antech diagnostics, such as Idexx, or Abaxis.

1. Simply submit the results of your blood analysis for CBC, Superchem (w/LDH), and T-4 (or equivalent).
2. Fill out Animal Nutrition Technologies' NBT Questionnaire (included with this packet)
3. Send by mail, fax, or e-mail to:

Animal Nutrition Technologies

1175 Post Road East
Westport, CT 06880
P: 888-533-5162
F: 866-433-1559
E: info@animalnutritiontechnologies.com



1175 Post Road East
Westport, CT 06880
tel: 203 341 8875
toll free: 888 533 5162
fax: 203 227 8094
www.animalnutritiontechnologies.com

How long before I receive the results?

Within 72 hours after receiving the results from the blood analysis, your NBT report will be faxed to your clinic/hospital.

Once I receive the results, what's next?

Once you receive the NBT results, call our toll-free number **888-533-5162** to schedule an appointment for a complimentary vet-to-vet consultation with our clinically experienced veterinary staff who will interpret the results, and the recommended nutraceutical therapy.

After consulting with your client, simply fill out the order form for the prescribed therapy included within your NBT report, and call, fax, or e-mail us to place the order.

What does the Nutraceutical Therapy consist of?

Typically the program consists of a custom blended nutraceutical powder containing glandulars, vitamins, minerals, and enzymes specific to each patients' NBT results. Liquid herbs, and homeopathics may also be prescribed based on the results.

How often should I have an NBT done?

Healthy animals (ages 1-7)	Every year
Seniors (ages 7+)	Every 6 months
Chronically diseased animals	Every 6 months
Seriously ill animals	Every 3 months (or as recommended)

Product Manual for Metabolic Fixed Formulas

Based upon the requests from numerous veterinarians who recognize the need for therapeutic nutraceutical protocols for the more common diseases and degenerative conditions, ANT has introduced a comprehensive line of fixed formulations available only to veterinarians.

This product line is unique in that its therapy is based upon the science and data of thousands of nutritional blood tests and meets the individual metabolic requirements of the animals. In addition, it satisfies the requests and economic preferences the client feels are best for their animals. The following is a brief guide to the Fixed Formula product line, and provides a general protocol recommendation for treatment of the more common symptoms and diagnoses.



Nutraceutical Support Formulas

1. Adrenal Support
2. Behavior/Emotional Support
3. Blood/Bone Marrow Support
4. Bone Support
5. Brain Nerve Support
6. Bronchus/Lung Support
7. Cardiac Support
8. Cartilage/Ligament Support
9. Esophageal Support
10. Eye Support
11. Gingival/Mouth Support
12. Immune/Auto Immune Support
13. Intestinal/IBD Support
14. Kidney Support
15. Liver/Gall Support
16. Pancreas Endocrine/Exocrine Support
17. Pituitary/Hypothalamus Pineal Support
18. Skin Support
19. Thyroid Support
20. Urinary Bladder Support

Adrenal Support Formula supplies the repair factors (RNA/DNA) required for proper and optimal function of the adrenal glands. Helps to regulate the sodium-potassium balance and supplies nutrients, amino acids and minerals required by hyper and hypo functioning adrenal glands.

Behavioral/Emotional/Stress Support Formula supplies the vitamins (C, A, E, B5, B6), minerals (Mg, Zinc) and amino acids (tryptophan) and nutrients (Lecithin, Phosphatidyl serine) required to balance and regulate the metabolic pathways of the brain. Has a calming, anti-inflammatory effect on the brain and peripheral nerves, promotes emotional balance and a sense of well being. It helps promote tranquility and calmness especially in stressful conditions such as thunderstorms, fireworks, in automobiles, boarding, grooming and veterinary hospital visits.

Blood/Bone Marrow Support Formula provides the required hematinic nutrients, vitamins and minerals such as Iron, Vitamin B12, Folic acid and Liver. Is beneficial for the cellular membranes and helps to regenerate and oxygenate red blood cells.

Bone Support Formula is high in esterase, amino acids and Vitamin D and supports the metabolism of phosphorus and calcium. It is a source of the trace minerals such as boron and silica, which are essential in the healing and metabolic processes of bones.

Brain Nerve Support Formula supports DNA synthesis and provides growth and repair nutrients for the brain and nervous system. It supplies magnesium and zinc as well as lecithin and myelin, which are required from insulation of nerves. It has a calming and quieting effect on the nervous system.

Bronchus/Lung/Sinus Support Formula provides repair nutrients for the bronchus, lungs and membranes including Vitamins A, D, E and amino acids. Supports oxygen carbon dioxide transport and has a dilating and relaxing effect on the bronchus

Cardiac Support Formula supplies the amino acids (taurine and carnitine), vitamins (E), minerals (Mg, Selenium) and antioxidants (CoQ10) required for optimum cardiac output, regular heart rhythm and proper blood flow. In addition helps in the regeneration and strengthening of heart muscle while maintaining elasticity of blood vessels.

Cartilage/Ligament Support Formula supplies glycosaminoglycans (GAG's) along with Vitamins C, E, A & Mn and Mg. Will help in the regeneration of connective tissue, cartilage and tendons while reducing inflammation at the cellular level. Supports the adequate production of synovial fluid and helps maintain elasticity and reduce inflammation and pain.

Esophageal/Gastric Support Formula has an antacid effect on the stomach (Contains sodium and enterogastrone) which helps to reduce stomach motility and acid production. In addition this formula is tissue sparing and helps to protect the mucosa thereby reducing the risk of ulceration and minimizing auto immune reaction such as in IBD.

Eye Support Formula supplies RNA, Vitamins A, C and Lutein which help promote proper functioning of the eye, assist in cellular repair and helps maintain and strengthen vision.

Gingival/Mouth Support Formula has an anti-inflammatory and anti-infection effect on mucous membranes of the mouth. Supplies vitamins (C, A, E) and minerals Selenium, Zinc) and antioxidants (Coenzyme Q10) all which help to protect and is tissue sparing on the mucosa of the mouth and gums.

Immune/Auto-Immune Support Formula offers supportive and regenerative effects on the glands and cells of the humeral and cellular immune system. The formula provides nutrients required by the body for the maintenance of homeostasis. In addition it has a tissue sparing effect in autoimmune conditions and support the normal pattern of cell division.

Intestinal/IBD Support Formula has an antacid effect on the GI tract. Supplies the amino acids L-Glutamine that supports intestinal health. In addition the formula protects the mucosa from inflammation and ulceration. It is helpful in chronic conditions such as IBD.

Kidney Support Formula contains growth and repair (RNA/DNA) factors required for improved kidney function. Helps to regulate protein metabolism by balancing the metabolic functions of the liver, pituitary and adrenal gland thereby reducing the excretion stress on the kidney. Also helps promote metabolic detoxification while helping to reduce inflammation and improve function.

Liver/Gall Bladder Support Formula supplies vitamins (C, A, E, K, B2, Folic Acid), minerals (calcium, zinc), amino acids (methionine, taurine, cysteine, glutathione) that support metabolic detoxification and cellular regeneration. Nutritionally supports under-functioning and inflamed liver cells. Replenishes the vitamins and minerals required for the proper functioning of the reticulo-endothelial system.

Pancreas Endocrine/Exocrine Support Formula helps to reduce inflammation by supplying antioxidant vitamins and specific amino acids. It supports pancreatic enzyme levels while helping digestion and assimilation and reducing flatulence. It supplies minerals (Chromium and Vanadium) that help in the metabolism and regulation of blood glucose levels.



1175 Post Road East
Westport, CT 06880
tel: 203 341 8875
toll free: 888 533 5162
fax: 203 227 8094
www.animalnutritiontechnologies.com

Pituitary/Hypothalamus/Pineal Support Formula helps to promote proper protein carbohydrate and fat metabolism and supplies essential amino acids (methionine and glutamine). Promotes hair growth and supports emotional health and behavior. Supports the body's organ function including thyroid, pancreas and adrenal glands.

Skin Support Formula supplies the vitamins (C, A, E, B6), minerals (Zn, K), fatty and amino acids that support new cell growth and metabolic functioning of the skin. Helps to regulate moisture and circulation and reduce inflammation. Helps promote detoxification and elimination of metabolic wastes through the skin.

Thyroid Support Formula supports proper cell growth and regeneration. It helps to reduce inflammation and auto-immune reactions. It supports thyroid and pituitary metabolism by supplying antioxidant vitamins (A, C & E), amino acids as well as naturally occurring iodine.

Urinary Bladder Support Formula contains repair (RNA/DNA) factors for the urinary tract. Helps reduce inflammation in the bladder and urethra and improves muscular control function of the bladder sphincter. Helps promote detoxification and has antiseptic and antibacterial properties.

Protocols

Adrenal Glands

Addison's disease - Adrenal Support Nutraceutical Formula + Addison's + Adrenal & Exhaustion drops
Cushing's disease - Adrenal Support Nutraceutical Formula + Adrenasol + Adrenal & Hypothalamus drops

Behavior/Emotions

Cognitive dysfunction - Behavioral/Emotional Support Formula + Relaxol + Brain drops + BHI Alertness
Motion sickness - Behavioral/Emotional/Stress Support Formula + Brain nerve formula + calming drops
Reaction to vaccines - Behavioral/Emotional/Stress Support Formula + Vaccine drops
Separation anxiety - Behavioral/Emotional/Support Formula + Wellness drops + Brain nerve formula
Thunder phobia - Behavioral/Emotional/Stress Support Formula + Calming drops and Brain/Nerve formula

Blood/Bone Marrow

Anemias - Blood/Bone Marrow Support Formula + Anemia blood drops + H28
From Kidney – Add kidney support remedies
Lipidemia - Blood/Bone Marrow Support Formula + Lipidemia

Bone

Osteomyelitis - Bone Support Formula + Osteomyelitis + Ligament + BHI Bone
Injury/Fx - Bone Support Formula + Inflammation drops + Pain formula
Panosteitis - Bone Support Formula + Pain Formula + BHI Traumeel

Brain/Nerve

Ataxia - Brain Nerve Support Formula + H46 + BHI Recovery
Cervical Spinal Disease - Brain Nerve Support Formula + H66 + Spinal nerve drops
Cerebral stroke - Brain Nerve Support Formula + BHI Recovery
Cognitive Dysfunction - Brain Nerve Support Formula + e Senility + Brain drops + BHI Recovery
Degenerative Myelopathy - Brain Nerve Support Formula + H99 + Spinal nerve drops
Epilepsy - Brain Nerve Support Formula + Anti and Post seizure drops + Epitrol + Epilepsy drops
Encephalitis - Brain Nerve Support Formula + H29 + BHI Infection + Brain/Nerve Formula
GME - Brain Nerve Support Formula + H25 + BHI Neuralgia + Brain drops
Hind leg paresis - Brain Nerve Support Formula + H74 + Spinal nerve drops
IV Disc Disease - Brain Nerve Support Formula + H71 + BHI Discum + Spinal nerve drops
Laryngeal paralysis - Brain Nerve Support Formula – H53 + BHI Neuralgia + Spinal nerve drops

Bronchus/Respiratory System

Asthma - Bronchus/Lung/Sinus Support Formula + Asthma drops + H91
Pleural effusion/Chylothorax - Bronchus/Lung/Sinus Support Formula + H61
Pneumonia - Bronchus/Lung/Sinus Support Formula + H23 + BHI Infection
Sinusitis - Bronchus/Lung/Sinus Support Formula + Sinus drops + Sinus formula
Tracheobronchitis - Bronchus/Lung/Sinus Support Formula + H1 + Cough drops + BHI bronchitis



1175 Post Road East
Westport, CT 06880
tel: 203 341 8875
toll free: 888 533 5162
fax: 203 227 8094
www.animalnutritiontechnologies.com

Cardiac

Arrhythmia - Cardiac Support Formula + H110 + Heart formula
Ascites - Cardiac Support Formula + Heart drops + BHI Circulation
Congestive Heart Failure - Cardiac Support Formula + Heart formula + Heart Assist + BHI Heart
Cardiomyopathy - Cardiac Support Formula + Heart drops + BHI Heart/Circulation

Cartilage/Ligaments/Connective Tissue

Hip & Elbow dysphasia, OCD - Cartilage Support Formula + H3 + Ligament drops + BHI Traumeel
IV Disc disease - Cartilage Support Formula + Back relief + BHI Back/Inflammation/Pain
Osteoarthritis - Cartilage Support Formula + H20 + Arthritis drops + BHI Traumeel/Zeel

Esophageal/Gastric

Gastritis - Esophageal/gastric Support Formula
Gastric ulcer - Esophageal/gastric Support Formula
Gastric dilatation - Esophageal/gastric Support Formula
IDB (stomach) - Esophageal/gastric Support Formula

Eye

Cataracts - Eye Support Formula + Cataract drops + BHI Cataract + Eye formula
Conjunctivitis - Eye Support Formula + H45 + BHI Allergy/Eye + Eye drops
Corneal Disease - Eye Support Formula + Eye formula + BHI Eye
Glaucoma - Eye Support Formula + Glaucoma drops + Eye formula
KCS - Eye Support Formula + KCS + Eye formula
Progressive Retinal Atrophy - Eye Support Formula + Eye drops + Eye formula
Retinal Detachment - Eye Support Formula + Retinal Detach/Hypertension + Eye drops + BHI Eye/Bone
Uveitis - Eye Support Formula + Uveitis + BHI Eye

Gingival/Mouth/Gum

Eosinophilic granuloma - Gingival/Mouth Support Formula + Eosinophilic granuloma + BHI Inflammation
Gingivitis/Stomatitis - Gingival/Mouth Support Formula + Gingivitis drops + H80
Rodent ulcer - Gingival/Mouth Support Formula + H84 + Gingivitis drops
Ulcerative Gingivitis - Gingival/Mouth Support Formula + H59 + Mouth/Gum formula + Bacterial drops

Immune/Auto Immune

Anemia - Auto Immune Support Formula + H28 + Blood/Bone marrow support + anemia drops
Cancer (By Type) - Immune/Auto Immune Support Formula + Specific Chinese Herb

FELV - Immune/Auto Immune Support Formula + BHI Enzyme + Viral Immune drops
Myositis - Immune/Auto Immune Support Formula + H101 + Ligament drops
Pemphigus/Lupus - Immune/Auto Immune Support Formula + Immunoderm + Immune drops

Sample Cancer Protocols

Hemangiosarcoma - Immune/Auto Immune/Cancer Support Formula +
Lymphosarcoma - Immune/Auto Immune/Cancer Support Formula + Lympho K + BHI Lymph
Osteosarcoma - Immune/Auto Immune/Cancer Support Formula + Osteoclaire (H2) + Bone support
formula + Immune Drops + BHI Enzyme

Intestines/IBD

Colitis/Enteritis - Intestinal/IBD Support Formula + Diarrhea drops + Intestine formula
IBD - Intestinal/IBD Support Formula + Colon Guard + Intestine drops
Protein losing enteropathy - Intestinal/IBD Support Formula + H50 + Intestine drops + BHI Intestine

Kidney

CRD - Kidney Support Formula + H75 + Kidney drops + Hypothalamus drops + BHI Kidney
Early Renal Disease - Kidney Support Formula + Kidney Guard + Kidney Prostate (Ovary) Adrenal drops
Incontinence - Kidney Support Formula + Pituitary formula + Incontinence drops + Female drops
Glomerular Nephritis - Kidney Support Formula + H87 + Kidney drops + Kidney Bladder formula

Liver/Gall bladder

Cirrhosis - Liver/Gall Bladder Support Formula + H75 + Liver formula
Colangiohepatitis - Liver/Gall Bladder Support Formula + H77 + Liver formula + BHI Liver GB
Copper toxicity - Liver/Gall Bladder Support Formula + Hepatic toxicity + Liver formula + BHI Liver
Hepatitis - Liver/Gall Bladder Support Formula + Liver Guard + Liver formula + BHI Liver
Lipidosis - Liver/Gall Bladder Support Formula + Hepatic lipidosis + Liver Gall bladder drops

Pancreas

Acute pancreatitis - Pancreas Endocrine/Exocrine Support Formula + BHI pancreas + BHI Pancreas/Pain
Chronic pancreatitis - Pancreas Endocrine/Exocrine Formula + Pancreatitis/Chronic + Pancreas drops.
Diabetes - Pancreas Endocrine/Exocrine Support Formula + Diabetes drops + Pancreas drops
Exocrine pancreatic insufficiency - Pancreas Endocrine Support Formula + Pancreas drops + BHI Pancreas

Pituitary/Hypothalamus/Pineal

Cognitive dysfunction - Pituitary/Hypothalamus/Pineal Support Formula + CD remedies + Pineal drops + (See Brain/Nerves Remedy Protocols)
Diabetes mellitus - Pituitary/Hypothalamus/Pineal Support Formula + Diabetes mellitus + Pituitary drops + (See Pancreas Remedy Protocols)
Diabetes insipidus - Pituitary/Hypothalamus/Pineal Support Formula + CDI + Pituitary drops
Hormonal skin conditions-Pituitary/Hypothalamus/Pineal Support Formula + (See Skin Remedy Protocols)
Hyperthyroid - Pituitary/Hypothalamus/Pineal Support Formula + (See Thyroid Remedy Protocols)
Hypothyroid - Pituitary/Hypothalamus/Pineal Support Formula + (See Thyroid Remedy Protocols)

Skin

Allergic dermatitis - Skin Support Formula + Derm Guard + Allergy + Skin drops + BHI Skin/Sulfur
Alopecia - Skin Support Formula + H44 + Skin drops
Contact Allergies - Skin Support Formula + Derm Guard + Grass/Trees/Dust
Fleas - Skin Support Formula + Derm Guard + Flea drops and formula
Pyoderma - Skin Support Formula + Furunculosis/Pyoderma + BHI Skin Infection



1175 Post Road East
Westport, CT 06880
tel: 203 341 8875
toll free: 888 533 5162
fax: 203 227 8094
www.animalnutritiontechnologies.com

Thyroid

Auto immune thyroiditis - Thyroid Support Formula + Thyroid drops + Pituitary drops
Hyperthyroid - Thyroid Support Formula + H55 + Thyroid drops + Hyperthyroid drops
Hypothyroid - Thyroid Support Formula + Thyroid drops + Hypothalamus drops

Urinary Bladder

Atony - Urinary Bladder Support Formula + Atonic bladder + Spinal nerve drops
Cystitis/Chronic/UTI - Urinary Bladder Support Formula + Kidney bladder formula + BHI Bladder Infect.
Incontinence - Urinary Bladder Support Formula - Incontinence support + BHI Bladder + Pituitary drops
Urolithiasis -Urinary Bladder Support Formula + Urinary drops + Kidney/Bladder formula